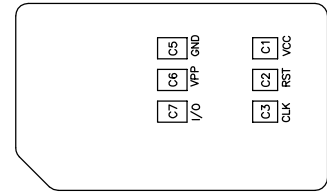
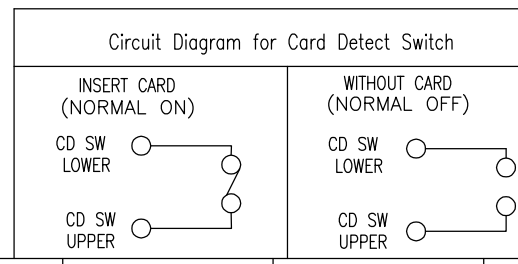
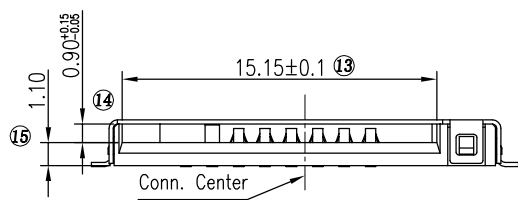


Specification

- * Electrical Characteristics :
 Current Rating: 0.5A AC/DC Max.
 Dielectric Withstanding Voltage: 250V AC/DC
 Insulation Resistance: 500M ohms Min.
 Contact Resistance: 100m ohms Max.
- * Mechanical Characteristics:
 Mating Cycles: 5000 Insertions.
- * Environmental :
 Operating Temperature: -40°C to +85°C.
- * Material:
 1.Housing:HI-Temp plastic UL 94V-0 Rated.
 2.Contact:Copper Alloy.
 3.Shell:Stainless Steel SUS 301,t=0.20mm.
- * Plating :
 Terminal:
 Contact area: G/F Plated Over 30u" Nickel.
 Solder area: 80u" Tin Plated Over 30u" Nickel.
 Under plate: 30u"Min. Nickel.
 Shell:
 30u"Min. Nickel Plated Over All,
 Solder Area: Gold Flash.



PIN NO.	DESCRIPTION
P1#	C1:VCC
P2#	C5:GND
P3#	C2:RST
P4#	C6:VPP
P5#	C3:CLK
P6#	C7:I/O
P7#	CD SW LOWER
P8#	CD SW UPPER



MILLIMETERS	INCH
x° ± 2'	x° ± 2'
.x ± 0.30	.XX ± 0.012
.XX ± 0.20	.XXX ± 0.008
.XXX ± 0.10	.XXXX ± 0.004

UNITS: MM

MAT'L: SEE NOTES

FINISH: SEE NOTES

QTY: SEE NOTES

THESE DRAWINGS AND SPECIFICATIONS ARE THE PROPERTY OF CIXI CARDCONN ELECTRONIC CO.,LTD COPIED OR USED IN ANY MANNER WITHOUT THE PRIOR WRITTEN CONSENT OF CIXI CARDCONN ELECTRONIC CO.,LTD IS PROHIBITED.

慈溪市卡连电子有限公司 CIXI CARDCONN ELECTRONIC CO., LTD	
PART NUMBER: SCCZ0Y03Z0YY	TITLE: SIM card 6+2 pin push H2.2
APPD:	DWG NO.: SCC-Z0Y03Z0YY
CHKD:	SCALE: 1:1
DR:	SHEET: 1
	REV.: A