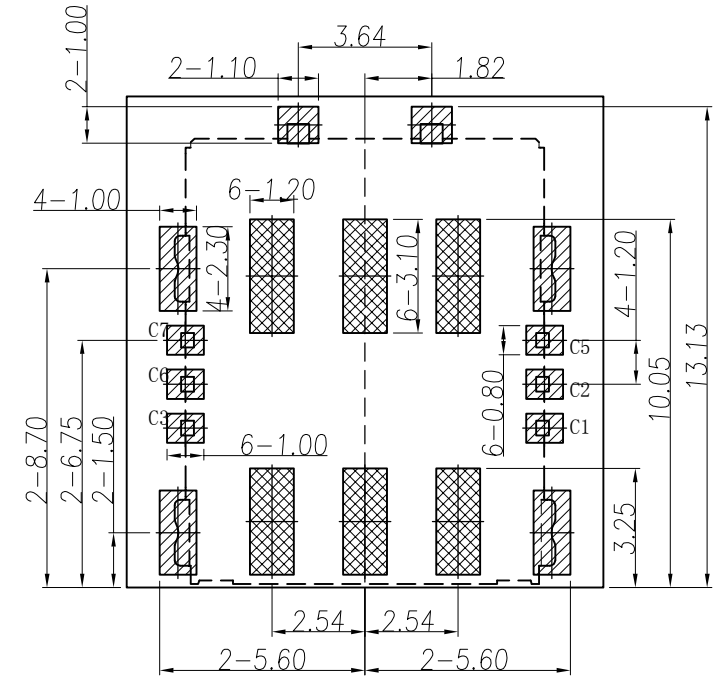
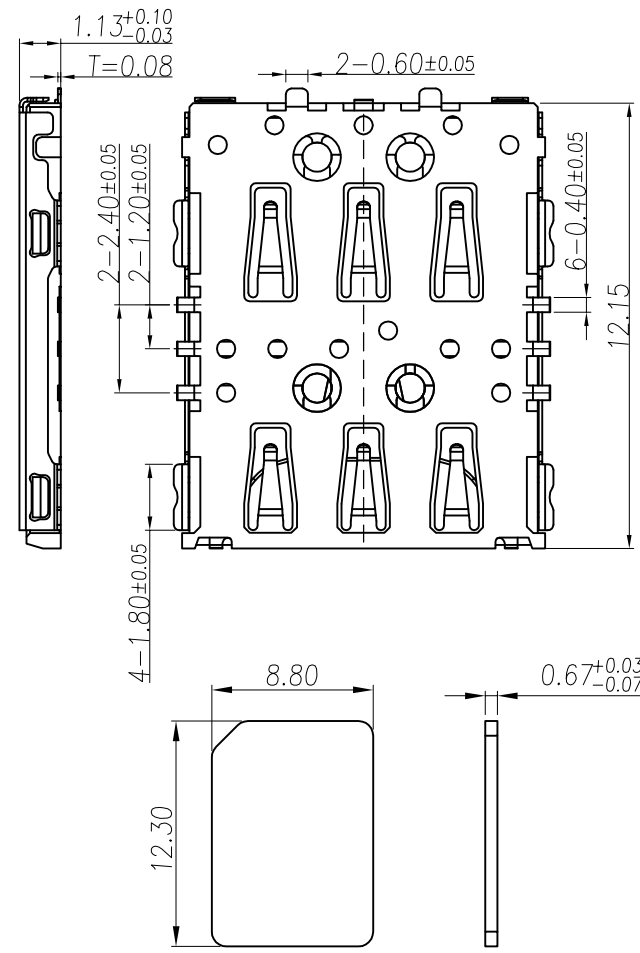
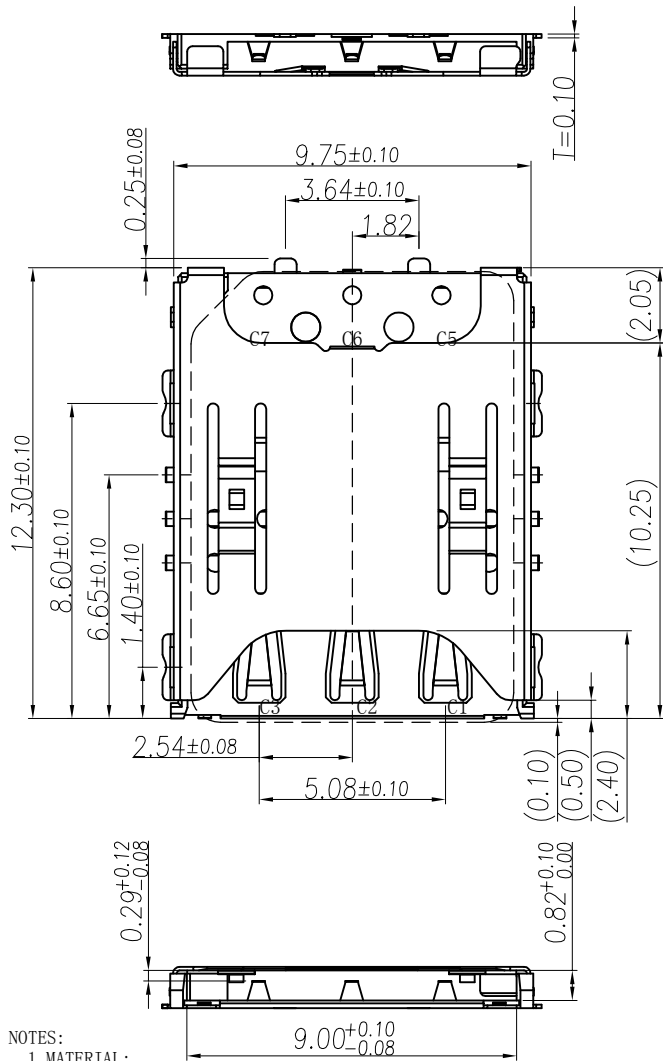


ROHS

REV.	ECN. #	DESCRIPTION	DATE
A0	—	NEW RELEASE	10/29/21



RECOMMENDED PCB LAYOUT

TOLERANCE: ±0.05

- SMT SOLDER AREA
- COPPER RESTRICTED AREA
- 1. TOUCH AREA OF CONTACT TIPS NO ELECTRICAL FUNCTION
- 2. NO FIRST PCB_LAYOUT CIRCUITS IN THE AREA

NOTES:
 1. MATERIAL:
 HOUSING:High Temperature Thermoplastic
 Terminal:Copper Alloy
 Shell:Stainless Steel
 2. PLATING:
 Terminal:30u" Ni UNDERPLATED OVERALL
 G/F PLATED ON CONTACT AREA
 100u" TIN PLATED ON SOLDER AREA
 Shell:50u" Ni UNDERPLATED OVERALL
 G/F PLATED ON CONTACT AREA AND SOLDER AREA
 3. TECHNICAL SPECIALITY:
 RATED VOLTAGE:30V AC MAX.
 CURRENT RATING:0.5A MAX.
 INSULATION RESISTANCE:1000Ω MIN
 CONTACT RESISTANCE:100mΩ MAX
 WITHSTANDING VOLTAGE:500V AC FOR 1 MINUTES
 OPERATING TEMPERATURE:-20℃~+85℃ Humidity80%R. HMAX

PIIN/NO	ASSIGNMENT
C1	VCC
C2	RST
C3	CLK
C5	GND
C6	VPP
C7	I/O

MILLIMETERS	INCH
X. ° ±2°	X. ° ±2°
.X ±0.30	.X ±0.012
.XX ±0.20	.XX ±0.008
.XXX ±0.10	.XXX ±0.004

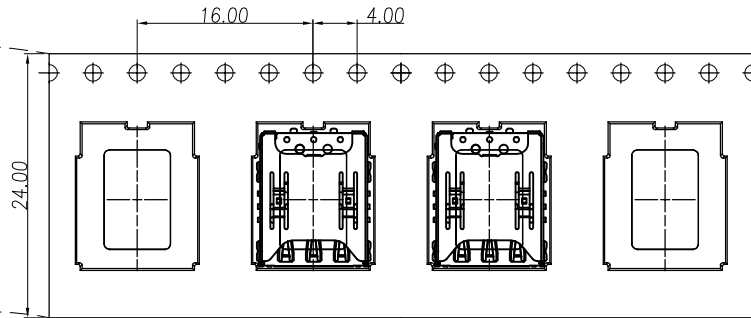
THESE DRAWINGS AND SPECIFICATIONS ARE THE PROPERTY OF CIXI CARDCONN ELECTRONIC CO., LTD
 COPIED OR USED IN ANY MANNER WITHOUT THE PRIOR WRITTEN CONSENT OF CIXI CARDCONN ELECTRONIC CO., LTD



TITLE	1.13H NO-PUSH NANO-SIM CARD		DR		
PART NO.	SCC102315212		CHKD		
PRO J.	PAGE	1/2	UNITS	mm	APPD
	SIZE	A4	SCALE	1:1	DIS NO.
					NS008-000<客户图>

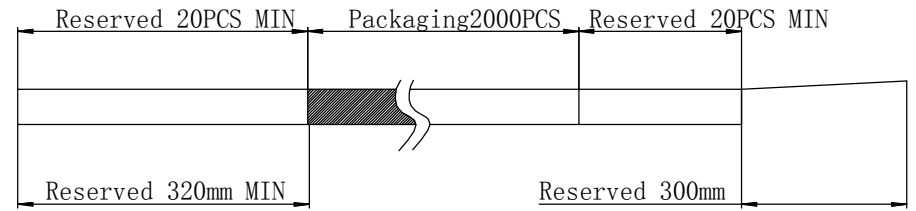
ROHS

Direction of use →



NOTES:

- 1、Packing quantity per plate: 2000PCS/Plate
- 2、Loading and packing method

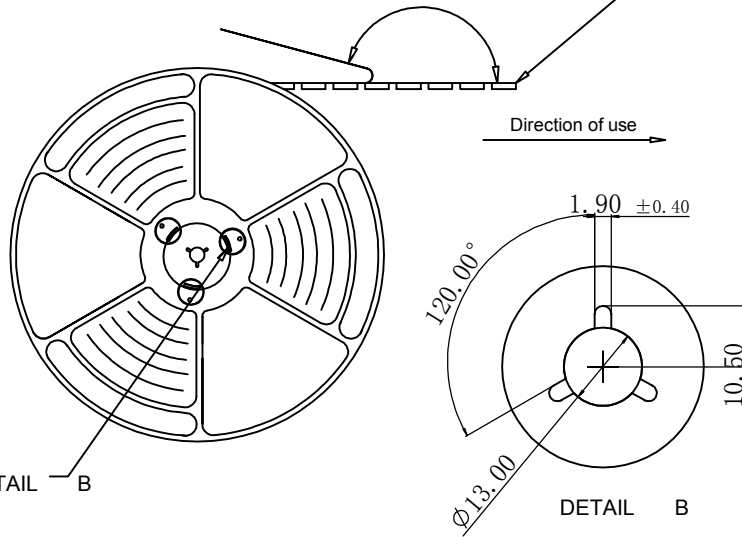


- 3、Total packaging: 20000PCS/Box

OVER TAPE PEELING FORCE: 20gf~120gf

Carrier Tape

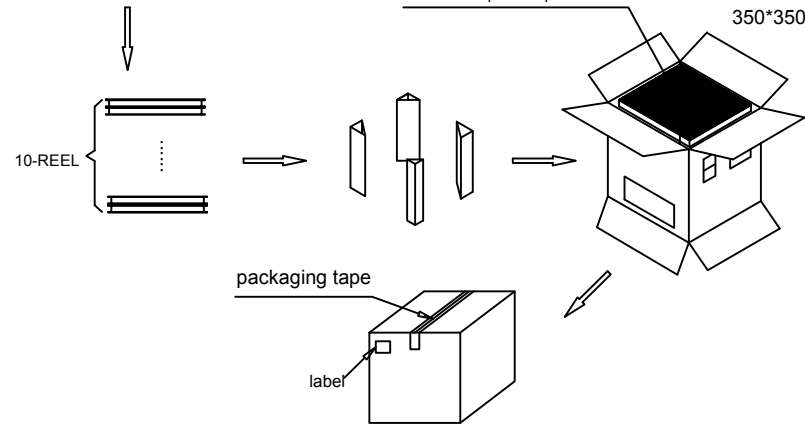
Direction of use →



The bottom and top of the carton Pad it with apiece of pearl cotton

BOX

350*350*340mm



Part Number	Description	Quantity
303020176	Carrierband (Lucent, PET W=24 PH=16,T=0.3)	326.4m
303040009	Box (K=K,T=7.0,350*350*340)	1PCS
303060001	PE Bag (T=0.08mm, 730*760*730)	1PCS
303070024	Self-adhesive (W=21.30)	329.4m
303110001	Beam (K=K, T=7.0,95*95*290)	4PCS
303130001	Pearl Wool (340*340*18)	2PCS
303180017	REEL (BLUE, 13Inches*24mm, φ330)	10PCS
102315212	1.13H No-Push Nano-SIM Card<NS008-000>	20000PCS

MILLIMETERS	INCH
X. ° ±2°	X. ° ±2°
.X ±0.30	.X ±0.012
.XX ±0.20	.XX ±0.008
.XXX ±0.10	.XXX ±0.004

THESE DRAWINGS AND SPECIFICATIONS ARE THE PROPERTY OF CIXI CARDCONN ELECTRONIC CO.,LTD
COPIED OR USED IN ANY MANNER WITHOUT THE PRIOR WRITTEN CONSENT OF CIXI CARDCONN ELECTRONIC CO.,LTD



慈溪市卡连电子有限公司
CIXI CARDCONN ELECTRONIC CO., LTD

TITLE	1.13H No-Push Nano-SIM Card	DR		
PART NUM.	SCC102315212	CHKD		
PRO J.	PAGE 2/2	UNITS mm	APPD	
SIZE	A4	SCALE 1:1	DIS NO.	NS008-000<客户图>