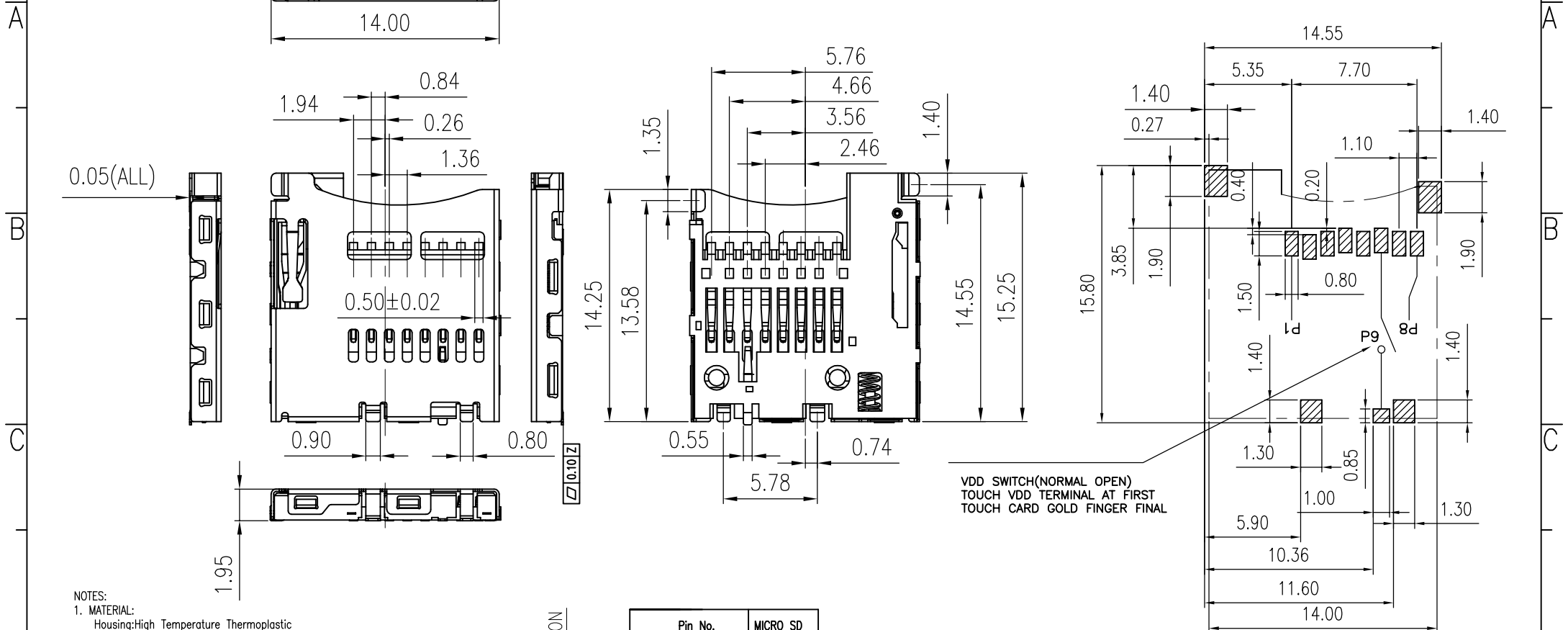


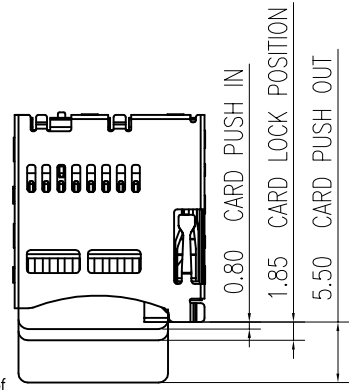
RoHS

REV.	EC#	DESCRIPTION	DATE	DRAWING	CHECKED	APPROVED
A0		NEW RELEASE	10/06'20	TEDDY	/	SUNNLY



NOTES:

- MATERIAL:**
 - Housing: High Temperature Thermoplastic UL94V-0; Color Black.
 - Contacts: Phosphor Bronze.
 - Tin 80u" at Solder Tail, Selected Gold Flash on Contact Area plating.
 - Shell: Stainless.
 - Gold Flash on Contact solder Area Over Nickel Plating.
- Electrical Characteristics:**
 - Operating voltage :100v AC(rms)/DC.
 - Current rating :0.5 A.
 - Operating Temperature: -25°C~+85°C.
 - Insulation resistance: 1000M ohms min. at 500VDC
 - Dielectric withstanding voltage :500 VAC/1minute.
 - Contact resistance: 100m ohms max.
- Mechanical characteristics**
 - Insertion force: 2.0kg Max.
 - Extraction force: 0.5kg Min.
 - Mating durability: 10000 cycles at the speed rate of 400~600 cycles/h; Without distortion of plastic and serious wear and tear in terminal, No signal break.

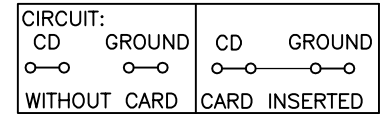


VDD SWITCH(NORMAL OPEN)
TOUCH VDD TERMINAL AT FIRST
TOUCH CARD GOLD FINGER FINAL

RECOMMEND PCB LAYOUT
GENERAL TOLERANCE ±0.05

Pin No.	MICRO SD
PIN1	DAT2 1P
PIN2	CD/DAT3 2P
PIN3	CMD 3P
PIN4	VDD 4P
PIN5	CLK 5P
PIN6	VSS 6P
PIN7	DAT0 7P
PIN8	DAT1 8P
PIN9	CARD DETECT

开关插卡状态



MILLIMETERS	INCH	UNITS
X° ± 2°	X° ± 2°	MM
.X ± 0.30	.XX ± 0.012	MAT'L
.XX ± 0.20	.XXX ± 0.008	SEE NOTES
.XXX ± 0.10	.XXXX ± 0.004	FINISH
THESE DRAWINGS AND SPECIFICATIONS ARE THE PROPERTY OF CIXI CARDCONN ELECTRONIC CO.,LTD		SEE NOTES
COPIED OR USED IN ANY MANNER WITHOUT THE PRIOR WRITTEN CONSENT OF CIXI CARDCONN ELECTRONIC CO.,LTD		QTY
		SEE NOTES

慈溪市卡连电子有限公司
CIXI CARDCONN ELECTRONIC CO., LTD

PART NUMBER: SCC102014492

TITLE: (TF014-010)
1.85H P.P TF Card 常开一体式 无柱 客户图

APPD: SCC102014492

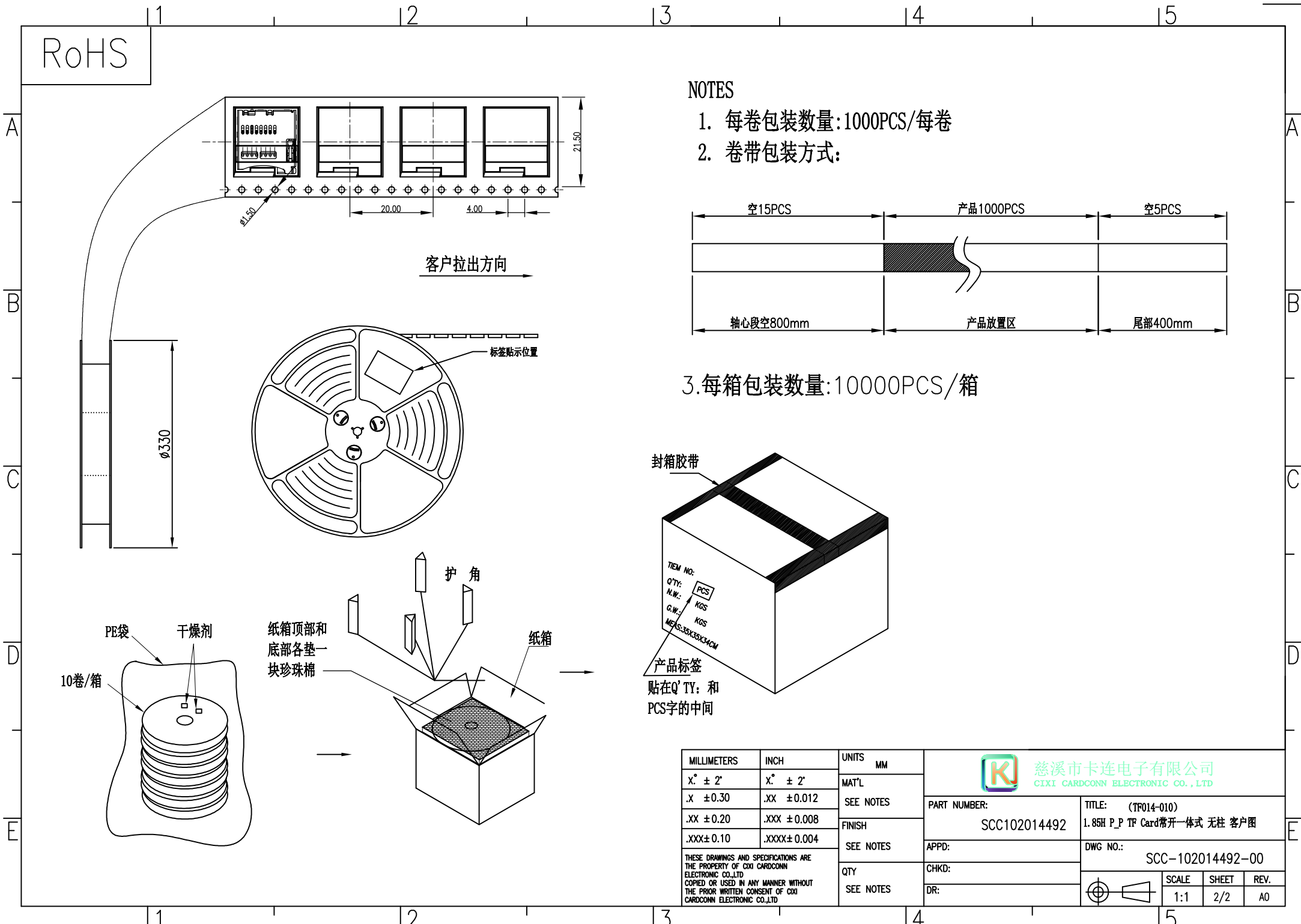
DWG NO.: SCC-102014492-00

CHKD:

DR:

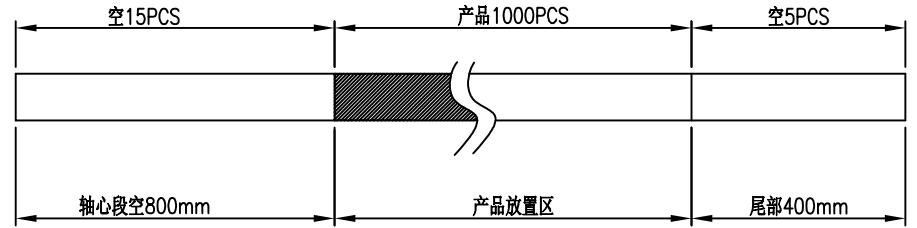
SCALE	SHEET	REV.
1:1	1/2	A0

RoHS

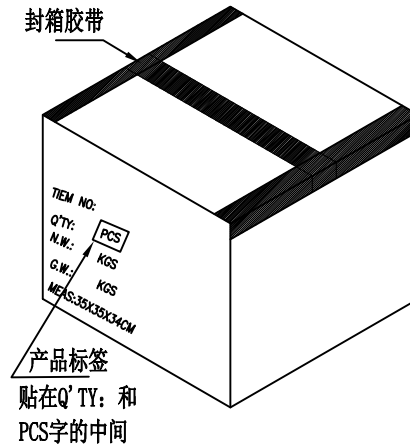


NOTES

1. 每卷包装数量:1000PCS/每卷
2. 卷带包装方式:



3. 每箱包装数量:10000PCS/箱



MILLIMETERS	INCH	UNITS	慈溪市卡连电子有限公司 CIXI CARDCONN ELECTRONIC CO.,LTD		
X° ± 2'	X° ± 2'	MM	PART NUMBER: SCC102014492		
X ± 0.30	.XX ± 0.012	MAT'L			
.XX ± 0.20	.XXX ± 0.008	SEE NOTES	APPD:		
.XXX ± 0.10	.XXXX ± 0.004	FINISH			
THESE DRAWINGS AND SPECIFICATIONS ARE THE PROPERTY OF CIXI CARDCONN ELECTRONIC CO.,LTD. COPIED OR USED IN ANY MANNER WITHOUT THE PRIOR WRITTEN CONSENT OF CIXI CARDCONN ELECTRONIC CO.,LTD			QTY SEE NOTES		
			DR:		
			SCALE SHEET REV. 1:1 2/2 A0		